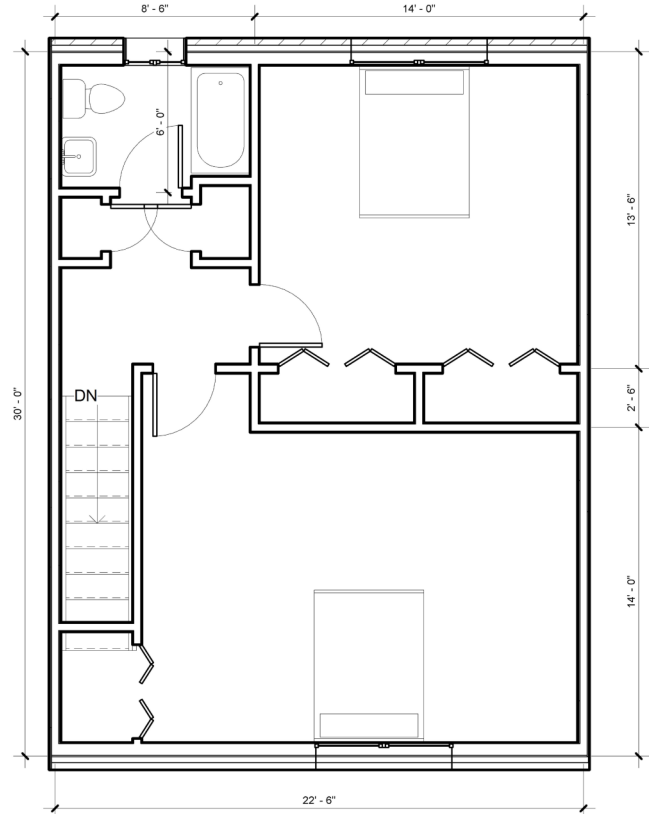
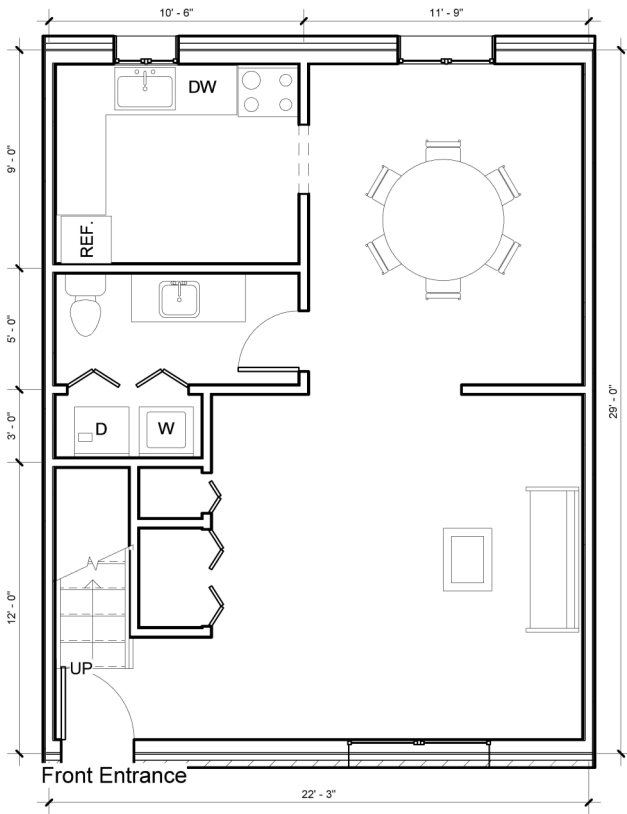


Pleasant Street

260 Pleasant St. Willimantic, CT 06226



Features:

- Laundry hook-up in unit
- Large carpeted rooms
- Patio porch
- Hot water baseboard heat
- Typical unit ~ 1,320 sq. feet

Spacious, townhouse style, 2 bedroom units, 1.5 bath with heat and all maintenance included in the rent.

Please contact the office for more details and an application

Paradise Agency, LLC
Property Management and Development
P.O. Box 175 151 Broadway
Colchester, CT 06415

(860) 537-7044 * Fax (860) 537-1142 * TDD/TT 1-800-842-9710

www.ParadiseAgency.com