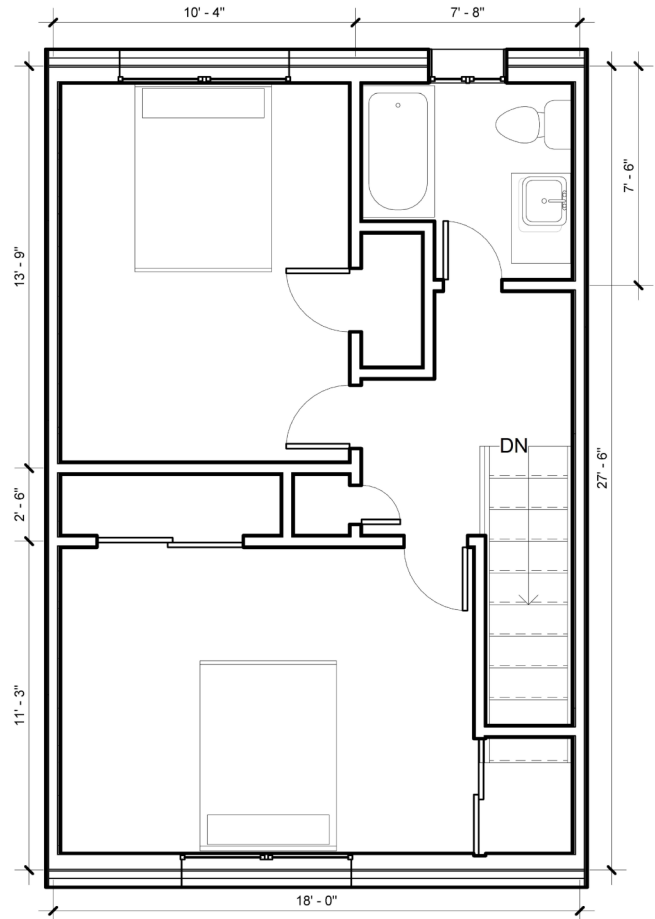
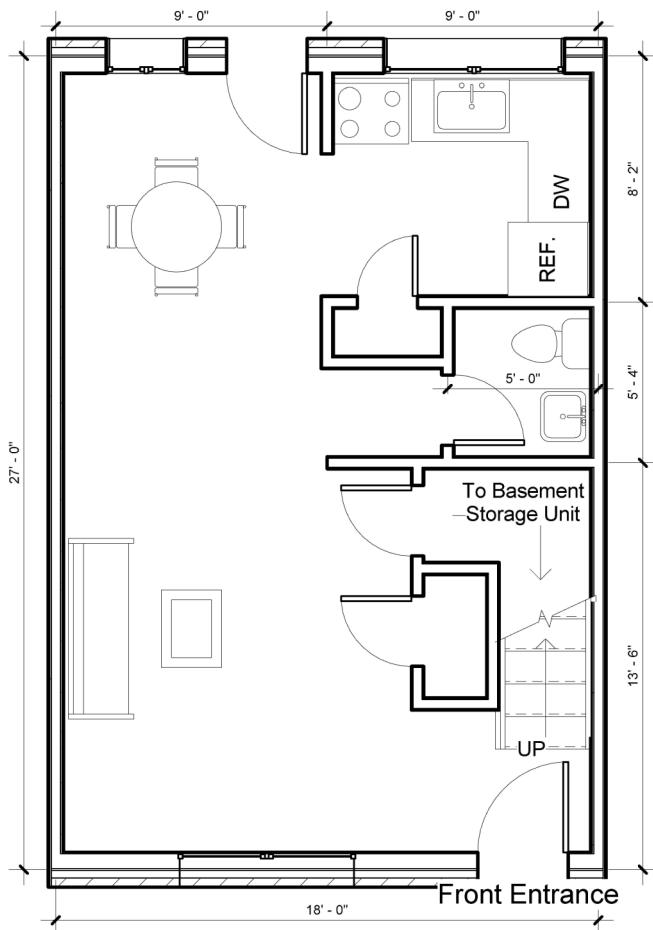


# Shady Lane

9 Cathcart Dr. Jewett City, CT 06351



## Features:

- Coin operated laundry in the building
- Hot water baseboard heat
- Large rooms with hardwood floors throughout
- Basement storage
- Typical unit ~ 980 sq. feet

Townhouse style, 2 bedroom units, 1.5 baths, with heat and all maintenance included in the rent.

Please contact the office for more details and an application

Paradise Agency, LLC

Property Management and Development

P.O. Box 175 151 Broadway

Colchester, CT 06415

(860) 537-7044 \* Fax (860) 537-1142 \* TDD/TT 1-800-842-9710

[www.ParadiseAgency.com](http://www.ParadiseAgency.com)