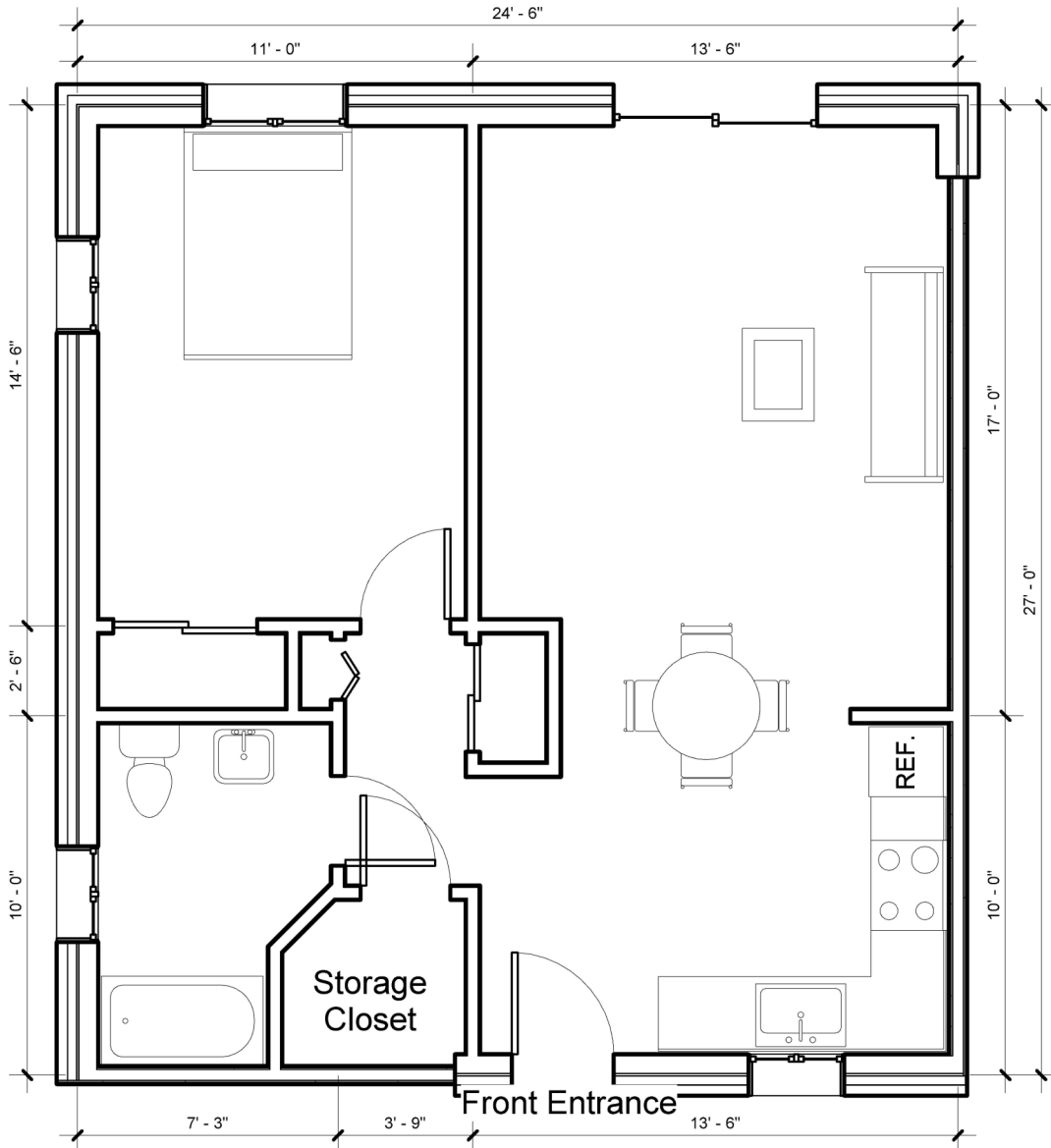


# Stone Ridge Estates: 1 Bedroom

12 Dr. Manning Dr. Lebanon, CT 06249



## Features:

- Community center with coin operated laundry
- Carpeted rooms
- Sliding rear patio door
- Efficient electric heat
- All maintenance included
- Typical unit ~ 660 sq. feet

Garden style apartments for ages 62 and older or persons with a disability.

Eligibility for housing based on USDA Rural Development qualifications.

Please contact the office for more details and an application.

Paradise Agency, LLC

Property Management and Development

P.O. Box 175 151 Broadway

Colchester, CT 06415

(860) 537-7044 \* Fax (860) 537-1142 \* TDD/TT 1-800-842-9710

[www.ParadiseAgency.com](http://www.ParadiseAgency.com)