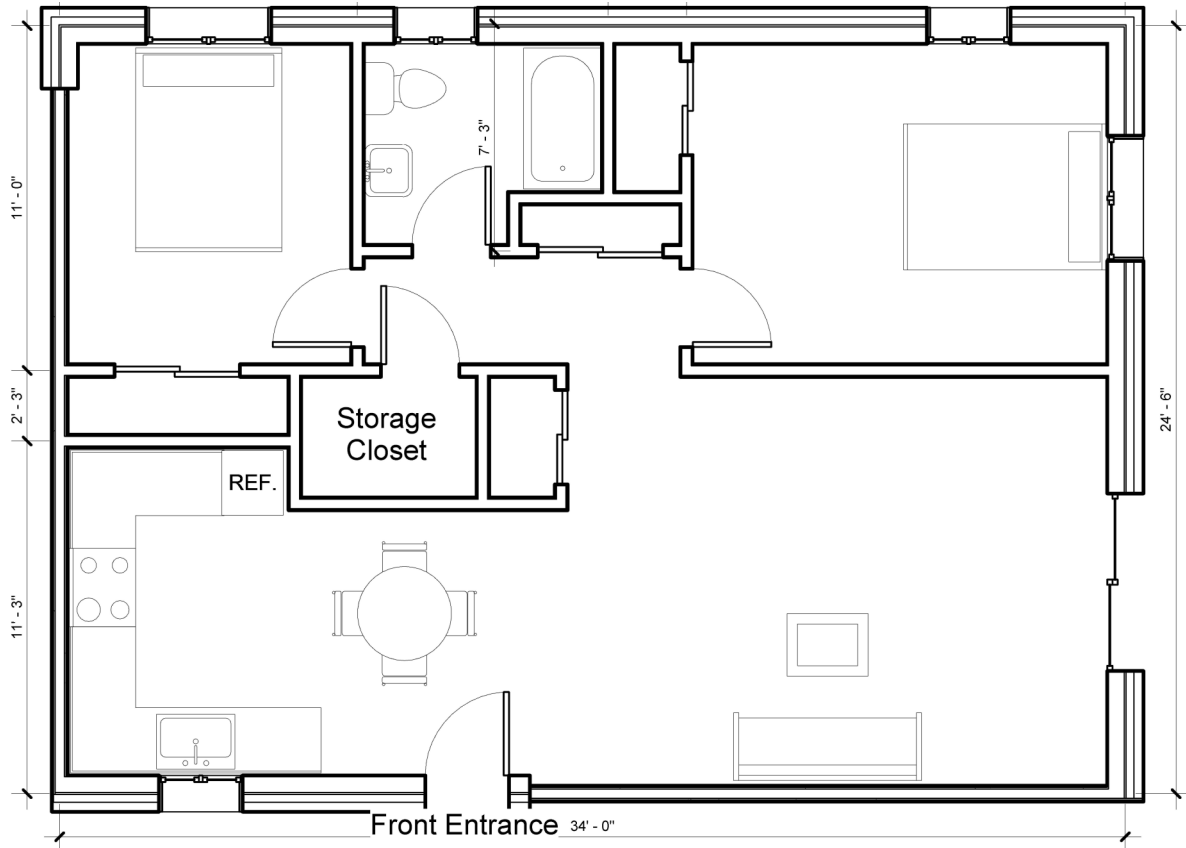


Stone Ridge Estates: 2 Bedroom

12 Dr. Manning Dr. Lebanon, CT 06249



Features:

- Community center with coin operated laundry
- Carpeted rooms
- Sliding rear patio door
- Efficient electric heat
- All maintenance included
- Typical unit ~ 830 sq. feet

Garden style apartments for ages 62 and older or persons with a disability.

Eligibility for housing based on USDA Rural Development qualifications.

Please contact the office for more details and an application.

Paradise Agency, LLC
Property Management and Development
P.O. Box 175 151 Broadway
Colchester, CT 06415

(860) 537-7044 * Fax (860) 537-1142 * TDD/TT 1-800-842-9710

www.ParadiseAgency.com